



Reliability through Experience

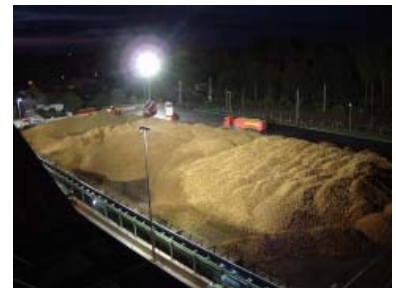
Sugar Technology



Concentrated sugar knowledge...

Beet reception
Beet yard

Dry yard
Wet yard



Beet washing

Prewashing
Washing
Slicing



Cane yard

Adapted to local conditions



...and specialised Teamwork

Pre-scalding

De Smet Type
Energy recovery



Cane and beet diffusion

Vertical diffusers
Horizontal diffusers
Beet and Cane diffusers



Purification

Purification process adapted to juice quality.
Energy recovery system



Evaporation

Falling or rising film type.
Tubular or plate bundle.
Energy recovery.



Crystallisation

Horizontal and vertical
Continuous and
discontinuous types.



Sugar drying & cooling

Drum or fluidized bed type



Sugar silo & maturation

Vertical silo

Various conditioning systems



Pulp pressing

Horizontal and vertical presses



Pulp drying

**Drum and conveyor type
Energy recovery**



Sugar refining

Process adapted to raw sugar quality and to local conditions.



Water treatment

Process adapted to local requirements.



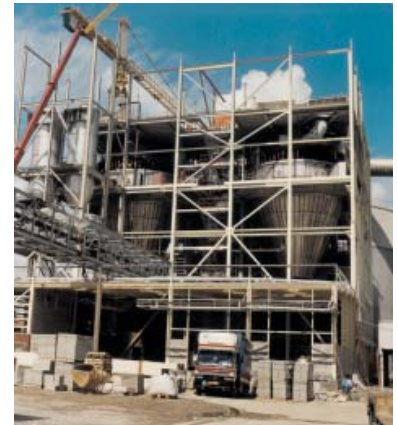
Chicory processing

Inline and derived product manufacturing

Purification & finishing

Atomizing

Bagging and automated storage

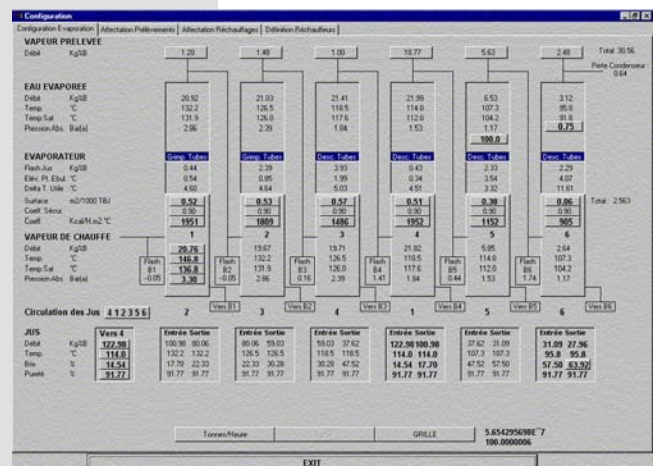


Pilot plant

Special sugar studies

Process optimizing studies

Energy saving studies



Turnkey Projects

Full
Project
Care

Consultancy and studies

Project financing

Project Management

Planning
Organising
Monitoring
Cost control

Design

Process technology
Utilities calculations
Civil engineering

Full process supply of De Smet technologies

Non-process auxiliaries

Water cooling systems
Steam boilers
Compressed air production
Electric power transformation
and generation
Interconnections, etc.

Non-process sections

Reception facilities
Ship unloading
Packaging
Bagging
Palletising

Full
Supply

Full
Responsibility
Concept

Manufacturing
Procurement
Inspection
Reception
Shipping & forwarding
Installation & supervision
Testing & control
Starting-up
Commissioning
Training





DE SMET ENGINEERS & CONTRACTORS is a privately held limited liability company incorporated in Belgium in 1989. It has an established reputation as a general contractor, specializing in the agro-industrial field where it is a fully-integrated world class provider of engineering, procurement and construction services.

It brings a compelling business offering that combines excellence in execution, safety, cost containment, experience and reliability with particular care towards energy saving and sustainability.

Sugar as well as **Oils & Fats** have been the core of **DE SMET ENGINEERS & CONTRACTORS**'s fields of activity. A major diversification towards the **Biofuels, Biochemicals** and **Agrochemical** industries has now taken place, based on its specific competence in agro-industrial engineering and project management acquired over the years.

DE SMET ENGINEERS & CONTRACTORS provides the industry with general contracting services from project management (**EPCM - Engineering, Procurement and Construction Management** or "*For and on Behalf*" operations) to full turnkey construction (**EPC - Engineering, Procurement and Construction**) allowing industrial operators to concentrate on their production commitments.

From conceptual study to vocational training, **DE SMET ENGINEERS & CONTRACTORS** has the ability and skill to **successfully complete large turnkey projects on brown- or greenfields**, all within the pre-established budget and delivery time, in a variety of geographical environment.



DE SMET s.a. ENGINEERS & CONTRACTORS
Waterloo Office Park
Bâtiment O - Bte 32
Drève Richelle, 161
B-1410 Waterloo - Belgium
Tel. : 32 (0)2 634 25 00 - Fax : 32 (0)2 634 25 25
E-mail : info@dsengineers.com
<http://www.dsengineers.com>